

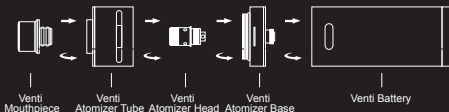
Venti User Manual

Notice for Use

Thank you for choosing WISMEC products! Please read this manual carefully before initial use. If you require additional information or have questions about the product or its use, please consult your local agents, or visit our website at www.wismec.com.

Product Introduction

The Venti, Italian for twenty, mimics the look of a 26650 Mod, hence its name: Venti. It is constructed from stainless steel, making it strong and durable. It has a 3000mAh power capacity and a 5.8ml liquid tank capacity to ensure lasting usage. Users can also choose from two kinds of atomizer heads either in 0.5ohm or 1.0ohm. Venti is truly remarkable for those seeking vapor production, battery life, large liquid capacity, and prolong use.



Quick Start

Click the button 5 times continuously, it will turn the device on/off. To use, press and hold the button down while you vape. Let go of the button when finish.

Liquid Fill Process

1. Unscrew the atomizer base off atomizer tube.
2. Slowly fill the liquid into the space surrounding the air pipe.

Note: Please make sure you refill into the right place and do not over fill into the air pipe.

Airflow Adjustment

Rotate the airflow control ring clockwise, the airflow hole will be exposed, the more the hole is exposed, the larger the airflow.

Battery Performance

Short circuit protection

- During usage:
1. The output will shut off automatically then the button light will blink 3 times indicating the short circuit protection has occurred.
 2. The device will shut down automatically and all the lights will turn off. In this situation, please charge the battery to reactive the device.

Before vaping: The button light will blink 5 times indicating the short circuit occurs.

10 second protection

If you hold the button for more than 10 seconds, the output will shut off automatically and the button light will blink 10 times.

Low voltage protection

If the battery voltage is lower than 3.3V, the button light flashes 40 times and then the device will shut down. You can charge the device via USB cable to

unlock the low voltage protection mode.

Resistance detection

If the resistance of the atomizer is greater than 5 ohm, it is too high for device to detect. When the button is pressed, the light will flash indicating there is no atomizer.

If the resistance of the atomizer is less than 0.15ohm, the button light will flash quickly 5 times.

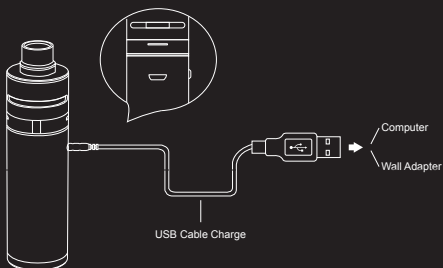
Battery Power Display

Current Battery Power	Light Indicator
60%-100%	Stay Solid
30%-59%	Blink Slowly
10%-29%	Blink Moderately
0-9%	Blink Quickly

Charging Process

The Venti is charged via USB port. It will take about 4 hours to fully charge the battery with an 1A charger.

The button light will be stay red during charging and turned off when the battery is fully charged.



Precautions

1. This product are intended for use by adults 18 years old and over. Women who are pregnant or nursing, people with certain health conditions may be affected by this product. Please consult your health care practitioners before use.
2. Keep all components away from children and pets.
3. Use the product only as instructed. Using your Venti outside of intended use may cause damage to the device and/or the user.
4. Do not attempt to repair the unit by yourself as damage or personal injury may occur.
5. Do not attempt to combine the Venti with parts from other brands of e-cigarettes.

Warranty

Please consult with your WISMEC distributors for warranty or return policy. We are not responsible for any damages caused by human error.



MADE IN CHINA

Manufactured by WISMEC